

Imagine.

Roland®

**VersaUV
LEJ-640F**

Flatbed printer
1,625mm wide
x
150mm thick

Flatbed printing onto rigid and flexible substrates up to 15cm thick.

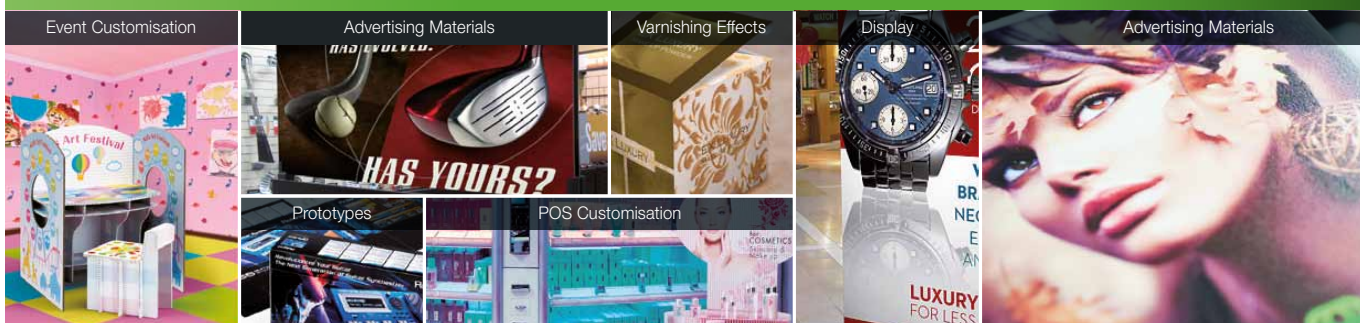
Based on the award-winning VersaUV technology, the VersaUV flatbed LEJ-640F prints CMYK plus white and clear inks onto both flexible materials and rigid substrates up to 15cm (6 inches) thick. With the LEJ-640F, you can print white on a variety of clear substrates for text and graphics that stand out. Layers of clear ink create custom patterns and embossing effects, perfect for premium brands. With a wide bed size of 1.6 by 2.5m, the LEJ-640F lets you explore a wide range of applications with just one device, from packaging prototypes and POP to wide-format signage and window displays.



Roland Texture System Library



LED Adobe PostScript 3
RIP & PRINT MANAGEMENT SOFTWARE
Roland VersaWorks®



Specialty inks add value and enhance your creativity

The LEJ-640F outperforms traditional CMYK printers with the addition of white and clear inks that together open up a new world of design opportunities. With high-opacity white ink, you can print crisp, bright text and graphics on a range of coloured and transparent material. Clear ink can be layered into striking gloss and matte finishes. More than 70 ready-to-apply patterns are included in Roland's VersaWorks Texture System Library.



Versatility

The LEJ-640F can print on a wide range of materials; rigid, flexible and sheets. These include polyurethane, polystyrene, polypropylene, cardboard, aluminium panels, fluted and corrugated boards and acrylics. It's also possible to print on sheets of flexible material such as self adhesive vinyl, polycarbonate, PET, polyethylene and PVC banner. The versatility and ease of use allows the operator to deliver many types of applications from one device.

Advanced technology

A fully-automated, built-in sensor determines the relevant print head height for each job, allowing for the thickness of the media to be printed. This feature prevents head strikes and ensures reliable, high-quality printing up to 1440 x 1440 dpi across the widest range of substrates with weights up to 200Kgs. The bed can be divided up into seven areas for ease of material handling and maximum productivity. Roland's unique ink circulation system prevents white ink particles from settling for reduced waste and consistent print quality.

Large UV-LED lamps increase productivity while lowering costs

The LEJ-640F features the latest generation UV-LED lamps, designed to cure Roland ECO-UV inks. This state-of-the-art curing system is safe to use and requires little power to operate. Lamps last up to 10,000 hours. The LEJ-640F LED curing lamps automatically reposition themselves for optimum image quality in each print mode.

*The life span of Roland UV-LED lamps may vary due to temperature and printing conditions.

LEJ-640F print modes and speeds

Print mode	Print speed
High quality	4.1 m ² /h (44.1 sqft/hr)
Standard	5.5 m ² /h (59.4 sqft/hr)
High speed	12.4 m ² /h (133.1 sqft/hr)

*Printed in CMYK, bi-directional

Choose from 3 different ink configurations

CMYK + Clear ink + White ink



CMYK + Clear ink + Clear ink



CMYK + White ink + White ink



VersaUV LEJ-640F

Flatbed printing onto rigid and flexible substrates up to 15cm thick.

Specifications		
Printing method		6 heads piezo, UV LED
Acceptable Media	Dimensions	Width 1,625 mm, Length 2,100 mm (extendable)
	Thickness	up to 150 mm
	Weight	Max 200 Kg
Printing area*1		Width 1,615 mm, Length 2,100 mm
Length out of range*2		1,870 mm
Ink cartridges	Type	ECO-UV 220cc
	Colours	Cyan, Magenta, Yellow, Black, White and Gloss
Vacuum system	Turbine	2.2 Kw (three-phase) with silencing system
	Partition	4 selectable areas (mm): 750x550, 800x1100
Interface		Ethernet Base 10/100
Printing resolution		up to 1440 DPI
Movements		Stepping motors 24,000 pulse/mm
Distance accuracy		Error of less than $\pm 0.3\%$ of distance travelled, or ± 0.3 mm (25°C)
Repetition on horizontal repositioning		± 0.01 mm
Control panel		LCD B/N 6 inches
Job purposes		Continuous, Unloaded, Return to origin, Stratified
Media height detection		Manual / Automatic optical (laser barrier) for opaque materials
Surface homogeneity check		Optical (laser barrier)
Power requirements		AC 380V three-phases (3+GND) - Switch Plug 16A 50/60Hz
Power consumption	With vacuum	2,700 W
	Sleep mode	150 W
Acoustic noise level	With vacuum	< 70 dB
Air requirements	Pressure	from 4 to 7 bar
	Volume*3	< 3 litres/hour
Environment	Power on	Operation temperature: 20-32 °C, Humidity 35-80% (no condensation)
	Power off	Operation temperature: 5-45 °C, Humidity 20-80% (no condensation)
Max dimensions		3,184(L) x 3,283(P) mm
Shipment dimensions packed	Shipment	2,225(L) x 3,283(P) mm
	Minimum*4	1,700(L) x 3,233(P)
Printing bed height		895 mm
Weight	Total	1,000kg
	Distribution	on 4 points diameter 120mm (1510 x 2910 mm)

*1 functional dimensions of vacuum bed.

*2 not covered length, out of printing unit.

*3 depends on number of starts of vacuum system, the air is used only for valve commands.

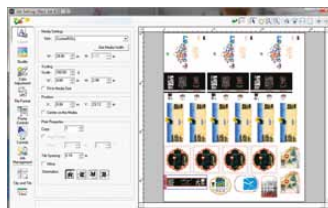
*4 if required and with additional charge (towers installation on-site).

The usage of the machine is limited only to those instructed and trained by Roland. It is necessary to add the extracting air system.

Roland VersaWorks System Requirements	
Operating system	Windows® 8 Professional/Ultimate (32-bit); Windows Vista® Business/Ultimate (32-bit edition), or Windows XP Professional Service Pack 2 or later (32-bit)
CPU	Core™ 2 Duo, 2.0 GHz or faster recommended
RAM	2 GB or more recommended
Video card and monitor	A resolution of 1,280 x 1,024 or more recommended
Free hard-disk space	40 GB or more recommended
Hard-disk file system	NTFS format
Optical drive	DVD-ROM drive

Options	Model	Description
ECO-UV Ink	EUV-MG	Magenta, 220cc
	EUV-YE	Yellow, 220cc
	EUV-CY	Cyan, 220cc
	EUV-BK	Black, 220cc
	EUV-WH	White, 220cc
	EUV-GL	Gloss, 220cc

Roland VersaWorks RIP and Print Management Software



VersaWorks™ RIP software has been developed exclusively for use with all Roland inkjet printers and printer/cutters. Its technical foundations are built on the latest Adobe® PostScript engine, providing you with a powerful production tool to ensure quick, flexible and precisely colour matched output.

- Easy-to-use graphical user interface
- Built with the latest Adobe PostScript (CPSI 3018) engine
- Roland Color spot colour management system
- Roland Texture Libraries for clear inks
- Simultaneous RIP and print capability
- Colour matching features
 - Built-in PANTONE® library automates spot colour matching
 - Predictive ink calculator estimates the amount of ink needed for each job
- Support for contour cutting
- Manages up to four Roland devices

Roland reserves the right to make changes in specifications, materials or accessories without notice. Your actual output may vary. For optimum output quality, periodic maintenance to critical components may be required. Please contact your Roland partner for details. No guarantee or warranty is implied other than expressly stated. Roland shall not be liable for any incidental or consequential damages, whether foreseeable or not, caused by defects in such products. Customers are responsible for observing related laws and ordinances if printed materials will be in direct contact with food or beverage. Adobe, PostScript, PostScript 3 and the PostScript logo are trademarks of Adobe Systems Incorporated. All other trademarks are the property of their respective owners. Roland DG Corp. has licensed the MMP technology from the TPL Group.