

Imagine.

 Roland®

DVE
Digital Value Engineering




Metallic Revolution

VersaCAMM Print&Cut Inkjets

VS-640 VS-540 VS-420 VS-300





Metallic Revolution

Add Stylish Accents, Sophistication and Premium Value with Metallic Silver Ink

With the addition of Metallic Silver ink, you can easily apply luxurious effects to printed graphics with brilliant metallic colors that were previously available only through silk screening, offset printing, and hot stamping. The design possibilities are boundless with the rich textures and smooth gradations of gold, silver, metallic and pearlescent colors. A choice of four inkjet printer/cutter sizes provides a wide variety of cost-effective options.

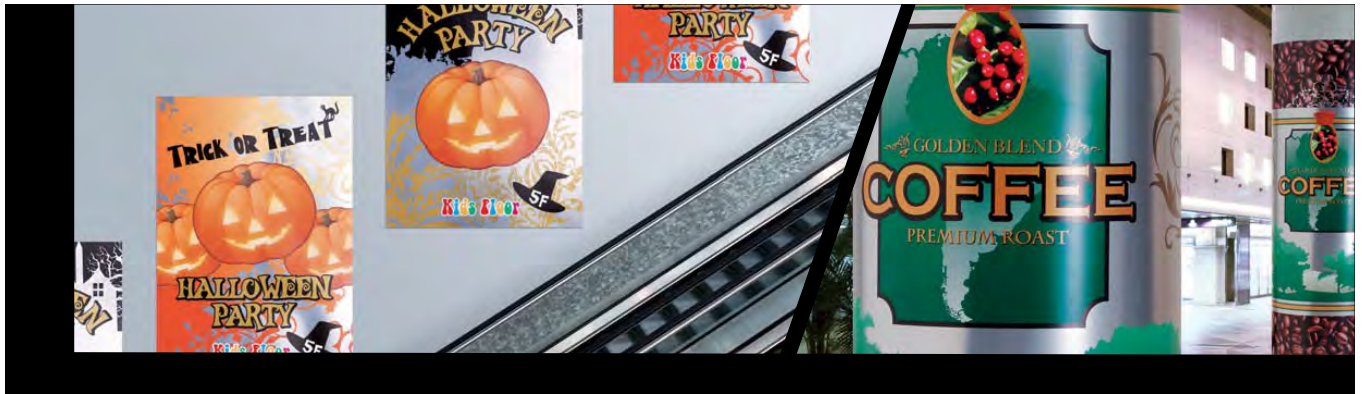


The advertisement features a black background with several large, colorful butterflies. Each butterfly is filled with a different pattern or color scheme, such as rainbow, polka dots, or geometric shapes. In the center, four Roland VersaCAMM printers are shown in a descending staircase arrangement. Each printer is labeled with its model number and a corresponding colored box indicating its width:

- VS-640** (64" width)
- VS-540** (54" width)
- VS-420** (42" width)
- VS-300** (30" width)

Below the printers, the **VersaCAMM** logo is prominently displayed. Underneath the logo, there are several icons and text blocks representing various features and technologies:

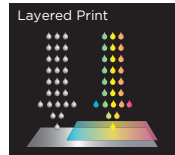
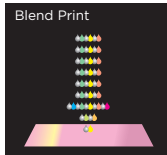
- Roland Metallic Color System Library
- Roland Metallic Texture System Library
- Roland Business Center
- 64 MBK Postscript 3
- ECO-SOL MAX Ink
- Print 65 Extra
- Full-bleed reproduction software
- Roland VersaWorks
- Roland On-Support
- 8 Colors
- 6 Colors
- 4 Colors
- Ink Circulation System
- New Print Head



Explore a New World of Creative Expression with Metallic Colors

Metallic Colors and White Ink Produce Premium Quality Results

The metallic and white ink option allows Roland VS users to add value and sophistication to virtually any graphic. ECO-SOL MAX Metallic Silver ink can be printed as a spot color, or combined with CMYK to produce a wide range of metallic and pearlescent colors. Two metallic print modes are available to expand your options. Choose Blend print mode to print CMYK+Lm and Metallic Silver ink together for natural metallic colors. Or choose Layered print mode to print Metallic Silver first, then CMYK+Lm with one pass. This mode achieves richer metallic colors just like by coating silver with translucent CMYK colors.

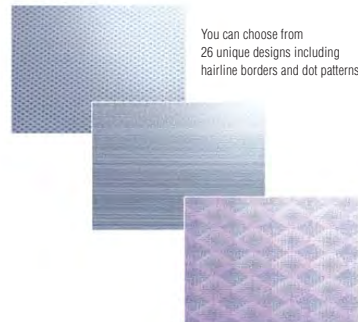


Produce Stunning Metallic Effects Easily

Roland's Metallic Texture System Library allows you to easily apply unique patterns and textures to metallic colors for added impact. Simply select a texture or pattern from the Roland swatch library in Adobe® Illustrator® and apply it to your graphic.



Roland Metallic Texture System Library



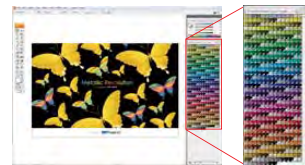
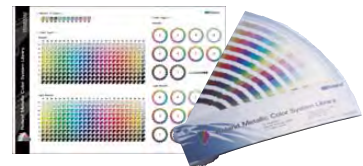
You can choose from 26 unique designs including hairline borders and dot patterns.

Wide Range of Metallic Colors Available with the Roland Color System Library

The VS series supports 512 spot metallic colors allowing you to apply one or more predefined colors to any graphic with a click of the mouse. You can also choose colors from Adobe® Illustrator®.



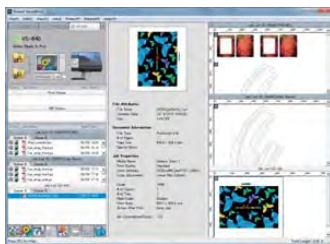
Roland Metallic Color System Library



Included Software Ensures Optimum Performance

VersaWorks, Roland's Powerful, Easy-to-Use RIP Software

Roland's true Adobe® PostScript® 3™ RIP is easy to use and incorporates the latest CPSI engine for exceptional production output. Features include estimation of ink usage and print time for each job, control of up to four Roland devices, and accurate color matching using the Roland Color System.

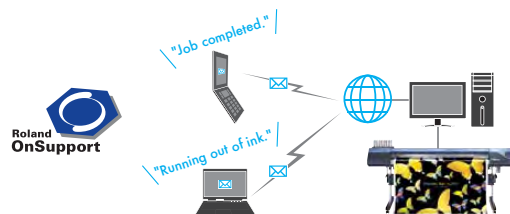


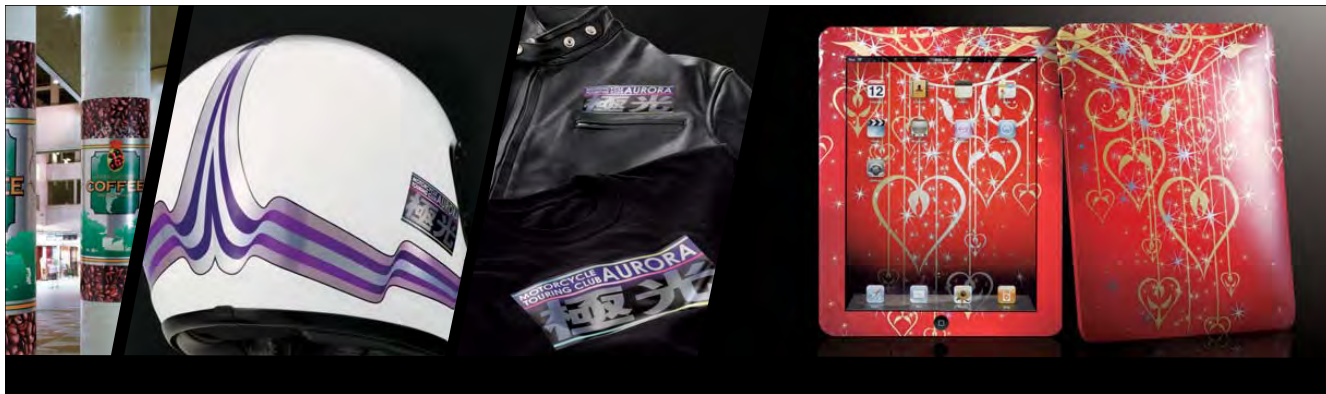
Ink Consumption:	62.69 cc
Cyan	4.82 cc
Magenta	2.11 cc
Yellow	15.12 cc
Black	0.89 cc
Light Magenta	2.09 cc
Light Cyan	11.38 cc
Metallic Silver	27.17 cc
Print Quality:	High Quality (24 nm)
	High Quality (Layered) (53 nm)

RIP & PRINT MANAGEMENT SOFTWARE
Roland VersaWorks® Adobe PostScript 3

Roland OnSupport for Remote Production Management

Roland OnSupport is an online customer support system allowing you to remotely track the status of your VersaCAMM VS series activities. The system sends e-mail notifications directly to your PC or mobile phone with important information such as when a job is completed and when ink is running low. With Roland OnSupport, you are free to leave your printer unattended, knowing that critical production information will be sent to you in real time. The system also provides valuable information such as how to create print files using metallic colors and tips to further enhance metallic effects.





Unique Printing Options to Drive Your Business

Choose From 3 Ink Configurations



8-Colors
 CMYK, Lc, Lm, Metallic Silver and White
 ECO-SOL MAX Metallic Silver Ink prints as a spot color or combines with CMYK for hundreds of stunning metallic colors.



6-Colors
 CMYK, Lc, Lm
 Produces flawless flesh tones and photographic image quality across lighter colors.



Double CMYK
 CMYK+CMYK
 Ideal for high volume production. No chromatic banding even with bi-directional printing due to the mirrored ink configuration.

*Ink configuration must be selected upon purchase.

New Print Head Delivers the Ultimate in Image Quality

Based on a new generation of print head technology, the VS series fires droplets of seven different sizes for beautifully smooth gradations, high-fidelity photographs and flawless solid colors. A new gold-plated print head is designed to repel ink, preventing clogs. Precision-rounded nozzles and accurate ink firing produce perfect ink droplets for unrivaled image quality.



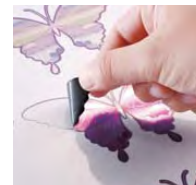
A new gold-plated print head



Roland Intelligent Pass Control

Integrated Printing And Contour Cutting for Increased Productivity

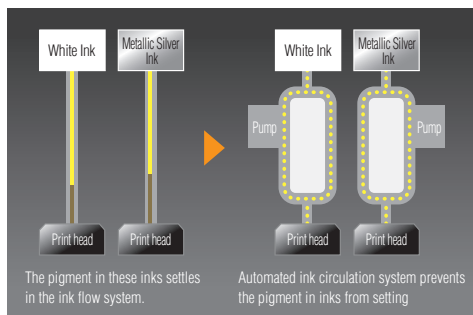
Roland's integrated Print&Cut Technology streamlines your production environment. With this efficient, automated process, you can produce print/cut graphics of virtually any shape on one device for maximum productivity. The optional media take-up system collects Print&Cut graphics automatically for unattended operation.



Print & Cut

Automated Ink Circulation System for Consistent Long-Term Image Quality

The VS series comes with Roland's unique, automated ink circulation system that prevents the pigment in metallic silver and white inks from settling. This system automatically reduces waste of white and metallic silver inks, lowers running costs, produces exceptional image quality, and ensures consistent metallic and white density throughout the longest production runs.



Flawless Media Feeding

The VS series features newly designed fixed media shafts and adjustable flanges for precision media tracking and easy loading and unloading of even the heaviest media rolls.



Specifications		VS-640	VS-540	VS-420	VS-300
Printing technology		Piezoelectric inkjet			
Media	Width	210 to 1,625 mm (8.3 to 64 in.)	210 to 1,371 mm (8.3 to 54 in.)	182 to 1,071 mm (7.2 to 42.2 in.)	182 to 762 mm (7.2 to 30 in.)
	Thickness	Maximum 1.0 mm (39 mil) with liner for printing Maximum 0.4 mm (16 mil) with liner and 0.22mm (9mil) without liner for cutting			
	Roll outer diameter	Maximum 210 mm (8.3 in.)			
	Roll weight	Maximum 40 kg (88 lb.)	Maximum 30 kg (66 lb.)	Maximum 25 kg (55 lb.)	Maximum 25 kg (55 lb.)
	Core diameter ¹	76.2 mm (3 in.) or 50.8 mm (2 in.)			
Printing / cutting width ²		Maximum 1,600 mm (63 in.)	Maximum 1,346 mm (53 in.)	Maximum 1,046 mm (41.2 in.)	Maximum 736 mm (29 in.)
Ink cartridges	Type	Roland ECO-SOL MAX INK			
	Capacity	220 cc or 440 cc			
	Colors	Eight colors (cyan, magenta, yellow, black, light cyan, light magenta, metallic silver and white), six colors (cyan, magenta, yellow, black, light cyan, and light magenta), or four colors (cyan, magenta, yellow, and black)			
Printing resolution (dots per inch)		Maximum 1,440 dpi			
Cutting speed		10 to 300 mm/s			
Blade force		30 to 300 gf			
Blade offset		0 to 1.5 mm (0 to 0.059 in.)			
Software resolution (when cutting)		0.025 mm/step (0.000984 in./step)			
Distance accuracy (when printing) ³⁻⁴		Error of less than ±0.3% of distance traveled, or ±0.3 mm, whichever is greater			
Distance accuracy (when cutting) ³		Error of less than ±0.4% of distance traveled, or ±0.3 mm, whichever is greater			
Distance accuracy (when printing) ³⁻⁴		When distance correction has been performed (when the setting for [CUTTING MENU] - [CALIBRATION] has been made): Error of less than ±0.2% of distance traveled, or ±0.1 mm, whichever is greater			
Repeatability (when cutting) ³⁻⁵		±0.1 mm or less			
Alignment accuracy for printing and cutting ³⁻⁶		±0.5 mm or less			
Alignment accuracy for printing and cutting when reloading media ³⁻⁷		Error of less than ±0.5% of distance traveled, or ±3 mm, whichever is greater			
Media heating system ⁸	Print heater	Setting range for the preset temperature: 30 to 45°C (86 to 112°F)			
	Dryer	Setting range for the preset temperature: 30 to 50°C (86 to 122°F)			
Connectivity		Ethernet (10BASE-T/100BASE-TX, automatic switching)			
Power-saving function		Automatic sleep feature			
Power requirements		AC 100 to 120 V ±10%, 8.2A, 50/60 Hz or AC 220 to 240 V ±10%, 4.2A, 50/60 Hz	AC 100 to 120 V ±10%, 7.9A, 50/60 Hz or AC 220 to 240 V ±10%, 4.0A, 50/60 Hz	AC 100 to 120 V ±10%, 7.2A, 50/60 Hz or AC 220 to 240 V ±10%, 3.7A, 50/60 Hz	AC 100 to 120 V ±10%, 5.6A, 50/60 Hz or AC 220 to 240 V ±10%, 2.9A, 50/60 Hz
Power consumption	During operation	Approx. 1,080 W	Approx. 1,050 W	Approx. 960 W	Approx. 740 W
	Sleep mode	Approx. 14.8 W	Approx. 14.4 W	Approx. 14.5 W	Approx. 14.4 W
Acoustic noise level	During operation	64 dB (A) or less			
	During standby	41 dB (A) or less			
Environmental	Power on	Temperature: 15 to 32°C (59 to 90°F) [20°C (68°F) or more recommended]; Humidity: 35 to 80%RH (no condensing)			
	Power off	Temperature: 5 to 40°C (41 to 104°F); Humidity: 20 to 80%RH (no condensing)			
Dimensions (with stand)		2,575 (W) x 705 (D) x 1,105 (H) mm (101.4 (W) x 27.8 (D) x 43.5 (H) in.)	2,315 (W) x 705 (D) x 1,105 (H) mm (91.2 (W) x 27.8 (D) x 43.5 (H) in.)	2,015 (W) x 705 (D) x 1,105 (H) mm (79.4 (W) x 27.8 (D) x 43.5 (H) in.)	1,705 (W) x 705 (D) x 1,105 (H) mm (67.2 (W) x 27.8 (D) x 43.5 (H) in.)
Weight (with stand)		130 kg (287 lb.)	120 kg (265 lb.)	105 kg (232 lb.)	90 kg (199 lb.)
Included items		Stand, power cord, blade, blade holder, media clamps, media holder, replacement blade for separating knife, software RIP, user's manual, etc.			

¹ The media holder of this machine is exclusively for media with a paper tube core inner diameter of 3 inches. To use a 2 inch media core, please use the optionally available media flanges. ² The length of printing or cutting is subject to the limitations of the program. ³ Using Roland specified media, loaded correctly, temperature 25°C (77°F), humidity 50%RH, all pinch rollers are used, 25 mm or more for both right and left margins and 35 mm or more front margin, excluding expansion or contraction of the media, and all correction and adjustment functions of this machine have been made properly. Not assured when the print heater or dryer is used. ⁴ Using Roland specified media, print travel of 1m *5 [PREFEED] menu item must be set to 'ENABLE'. 64-inch and 54-inch models, media over 610 mm wide, and 4,000 mm long. Media 610 mm wide or less and 8,000 mm long 42-inch and 30-inch models, 3,000 mm long. ⁵ Provided that media length is under 3,000 mm. Excluding possible shift caused by expansion/contraction of the media and/or by reloading the media. ⁶ Using Roland specified media, data size: 1,000 mm in the media-feed direction, 1,600 mm (64-inch model), 1,346 mm (54-inch model), 1,046 mm (42-inch model), or 736 mm (30-inch model) in the carriage-movement direction. No lamination. Automatic detection of crop marks at 4 points when media is reloaded. During cutting, [PREFEED] menu item must be set to 'ENABLE'. Excludes the effects of skewed movement and of expansion and contraction of the media. ⁷ Warm-up is required after powerup. This may require 5 to 20 minutes, depending on the operating environment. The preset temperature may fail to be reached depending on the ambient temperature and media width.

Roland VersaWorks System Requirements

Operating system	Windows® 7 Professional/Ultimate (32-bit); Windows Vista® Business/Ultimate (32-bit); Windows® XP Professional Service Pack 2 or later (32-bit)
CPU	Core™2 Duo, 2.0 GHz or faster recommended
RAM	2 GB or more recommended
Video card and monitor	A resolution of 1,280 x 1,024 or more recommended
Free hard-disk space	40 GB or more recommended
Hard-disk file system	NTFS format
Optical drive	DVD-ROM drive

Option

Automated take-up system

TU2-64 For VS-640 **TU2-54** For VS-540
TU2-42 For VS-420 **TU2-30** For VS-300

Application software compatible with Cutting and Print&Cut

Adobe® Illustrator® 10, CS, CS2, CS3, CS4 / CorelDRAW® 11, 12, X3

Options

	Model	Description		Model	Description
ECO-SOL MAX Media (for banners, posters, POPs and vehicle graphics, etc.)	SFPLF-1300	Backlit film, 1300 mm x 30 m (51' x 98')	ECO-SOL MAX INK	ESL3-4MG	Magenta, 440cc
	SV-G-1270G	Gray adhesive vinyl, 1270 mm x 30 m (50' x 98')		ESL3-4YE	Yellow, 440cc
	SV-G-610G	Gray adhesive vinyl, 610 mm x 30 m (24' x 98')		ESL3-4CY	Cyan, 440cc
	SCM-GPPG-40-127	White glossy photo paper, 1270 mm x 40 m (50' x 131')		ESL3-4BK	Black, 440cc
	SCM-GPPG-50-914	White glossy photo paper, 914 mm x 50 m (35' x 164')		ESL3-4LC	Light cyan, 440cc
	MPP-SG-1067	Semi glossy photo paper, 1067 mm x 30 m (42' x 98')		ESL3-4LM	Light magenta, 440cc
	SCM-GVVG-40-137	Calendered White Vinyl, adhesive, 1370 mm x 40 m (53' x 131')		ESL3-MG	Magenta, 220cc
	SCM-GVVG-40-152	Calendered White Vinyl, adhesive, 1520 mm x 40 m (60' x 131')		ESL3-YE	Yellow, 220cc
	SP-CL-1000T	Clear PET film, adhesive, 1000 mm x 20 m (39' x 65')		ESL3-CY	Cyan, 220cc
	SP-CL-515T	Clear PET film, adhesive, 515 mm x 20 m (20' x 65')		ESL3-BK	Black, 220cc
	ESP-CL-1300	Clear PET film, 1300 mm x 30 m (51' x 98')		ESL3-LC	Light cyan, 220cc
	SCM-GPPM-40-127	Photo mat paper, 1270 mm x 40 m (50' x 131')		ESL3-LM	Light magenta, 220cc
SCM-GPPM-50-762	Photo mat paper, 762 mm x 50 m (30' x 164')	ESL3-MT	Metallic silver, 220cc		
ECO-SOL MAX Media (for decals)	SCM-GGPET-40-500	Glossy gold PET, adhesive, 500 mm x 40 m (19' x 131')	ESL3-WH	White, 220cc	
	SCM-GSPET-40-500	Glossy silver PET, adhesive, 500mm x 40 m (19' x 131')	SL-CL	Cleaning liquid, 1 pc.	
	SCM-GSPVC-40-610	Glossy gold vinyl, adhesive, 610mm x 40 m (24' x 131')	ZEC-U5022	For thick, reflective and fluorescent vinyl, 2pcs.	
	SCM-GSPVC-40-610	Glossy silver vinyl, adhesive, 610mm x 40 m (24' x 131')	ZEC-U5025	For thick, reflective and fluorescent vinyl, 5pcs.	
ECO-SOL MAX Media (for garment heat transfer)	SP-M-1270	Matte PET film, 1270 mm x 30 m (50' x 98')	Blade Holders	XD-CH2	Blade holder with blade extension adjuster, made of aluminum
	SP-M-610	Matte PET film, 610 mm x 30 m (24' x 98')		XD-CH3	Blade holder with blade extension adjuster, made of resin
ECO-SOL MAX Media (for garment heat transfer)	SCM-TTRH-25-750	Garment heat transfer, 750 mm x 25 m (29' x 82')	Automated take-up system	TU2-64/54/42/30	For VS-640/540/420/300, rolls up to 30kg (66 lbs.)
	HTSP-10-500	Special silicon paper for matte finish, 500 mm x 10 m (19.68' x 32.8')		TUC-2	Controller for TU2-64/54/42/30 take-up system
	HTTA-25-500	Application film, 500 mm x 25 m (19' x 82')			

*The glossiness of metallic colors depends on the media used. For best results, produce a test print on each substrate before production.

About Metallic Silver and White Inks Due to the nature of white and silver inks, the pigment in these inks will settle in the cartridge and ink flow system, requiring you to shake the cartridge before each use. Outdoor durability is three years for CMYK inks, one year for white ink, and one to three years for metallic silver ink, depending on the media used. Roland strongly recommends lamination for both indoor and outdoor graphics to ensure the quality of metallic inks.

Roland DG products that feature this environmental label meet the company's criteria for environmental consciousness, a set of standards based on ISO 14021 self-declaration type II. For more information, please visit www.rolanddg.com.

As an ENERGY STAR® partner, Roland DG Corporation has determined that this product meets the ENERGY STAR guidelines for energy efficiency. ENERGY STAR is a U.S. registered mark.

ISO 14001:2004 and ISO 9001:2008 Certified

Roland pursues both environmental protection and continuous quality improvement. Under the philosophy of preserving the environment and human health, Roland is actively working to abolish organic solvents in production, to reduce and recycle waste, to reduce power use, and to purchase recycled products. Roland constantly strives to provide the most highly reliable products available.

QMS, EMS
JMAQA-270
JMAQA-E089

Roland reserves the right to make changes in specifications, materials or accessories without notice. Your actual output may vary. For optimum output quality, periodic maintenance to critical components may be required. Please contact your Roland dealer for details. No guarantee or warranty is implied other than expressly stated. Roland shall not be liable for any incidental or consequential damages, whether foreseeable or not, caused by defects in such products. Adobe, PostScript, PostScript 3 and the PostScript logo are trademarks of Adobe Systems Incorporated. All other trademarks are the property of their respective owners. Roland DG Corp. has licensed the MMP technology from the TPL Group.