

TrueVIS VG2 series

TRUST YOUR INSTINCTS  
CHOOSE TrueVIS VG2



 Roland

# TRUST YOUR I



TrueVIS VG2 series, the next generation in integrated print and cut. With over 40 exciting enhancements, TrueVIS VG2 printer/cutters are truly remarkable in every respect. With the superior vibrancy of new TR2 ink - now with Orange - the VG2 also includes a unique colour management preset, True Rich Color, that optimises the potential of both printer and ink for unprecedented colour reproduction. Brilliant yet natural colour, plus increased print and cut accuracy combine to take your graphics to the next level.

## Amazingly Fast Turnaround

The TrueVIS VG2 allows you to print, laminate and apply the same day with the reassurance of quality output and reliable installation. Print then laminate in as little as 6 hours\*\*, ensuring that you deliver against your customers' expectations and, most importantly, beat your competitors' time to market.



PRINT



6 HOURS



FINISH



INSTALL


# INSTINCTS

Introducing **TrueVIS VG2 series** printer/cutters

## A New Generation of TrueVIS Eco-Solvent Ink

TR2 ink supports 2 x CMYK and 7-colour + White, plus an 8-colour Orange configuration, to increase the breadth of colour gamut and add real impact and high visibility to graphics. For even richer prints, a new Multiprocess Color Function has been developed so that Orange ink can be used in all file types as a process colour or spot if specific colour matching is required. TrueVIS VG2 and TR2 ink is certified by the 3M™ MCS™, providing assurance of quality and reliability of graphics, and supports Avery Dennison™ ICS™ performance guarantee\*. Also certified GREENGUARD Gold for safe indoor applications.

 8 Colours : CMYKLcLmLkOr

 7 Colours + Wh : CMYKLcLmLkWh

 4 Colours : CMYK



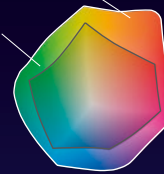
PRODUCT  
CERTIFIED FOR  
LOW CHEMICAL  
EMISSIONS:  
UL.COM/GG  
UL 2818

## True Rich Color Invented Here True Rich Color

In order to take full advantage of the VG2's superior colour reproduction capability and the wide colour gamut provided by new TR2 ink, Roland DG has developed a new colour management preset, True Rich Color. Now vibrant colour can be combined with neutral grays, smooth gradations and natural skin tones to create stunning graphics. Don't compromise on colour accuracy or vibrancy – True Rich Color gives you the best of both.

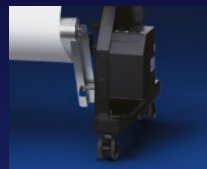
True Rich Color

Prepress  
General



## High Quality at High Speed

The VG2 builds upon the BLI award-winning quality and productivity of the previous generation VG.\*\*\* Roland DG FlexFire printheads produce the precision ink firing that enables printing neutral grays, vivid colours, and smooth skin tones even at the highest speeds. A new optional media take-up unit supports two modes for improved take-up accuracy from thin films to heavy canvas.



## Unsurpassed Cutting Performance

The VG2 offers a host of technological advancements to improve both print and cut accuracy for reliable results and unattended operation. Newly designed middle pinch rollers raise automatically prior to starting the cutting process, allowing the media to be cut without the rollers travelling over the printed area. New crop mark options for cutting laminated prints or long production runs of print and cut graphics provide perfect cutting performance when used in combination with the new optimised side pinch roller pressure functionality.



## VersaWorks 6 to Power Up Your Printing Business

The new VersaWorks 6 RIP is designed to simplify operation while maximising the power of your VG2 and other Roland DG devices. A Harlequin RIP dual-core engine, support for PDF 2.0 and native 64-bit processing provides accurate rendering of PDFs with shadows and transparencies. Icon-based interface with drag-and-drop functionality facilitates ease of use.



\* 3M™ MCS™ and Avery Dennison™ ICS™ Warranty coverage currently applies to CMYKLcLm. White and Orange to follow. Users of 8c configuration can select 7c for full conformity.

\*\* Tests performed by Avery Dennison on MPI Range digital media. When using this media, prints produced on VG2 with TR2 ink can be laminated after a 6-hour period when rolls or images are properly ventilated and loosely wound.

\*\*\* TrueVIS VG Series printer/cutters won the Pick Awards 2019 for Image Quality and Productivity from Buyers Lab. Image shows printer with optional take-up system.





# TrueVIS VG2 series

Specifications		VG2-640	VG2-540
Model		VG2-640	VG2-540
Printing method		Piezo ink-jet method	
Media	Width	315 to 1625 mm (12.4 to 64 in.)	275 to 1371 mm (10.8 to 54 in.)
	Thickness	Max. 1.0 mm (39 mil) with liner, for printing Max. 0.4 mm (16 mil) with liner and 0.22 mm (9 mil) without liner, for cutting	
	Roll outer diameter	Max. 210 mm (8.3 in.)	
	Roll weight	Max. 40 kg (88 lb.)	Max. 30 kg (66 lb.)
	Core diameter *1	76.2 mm (3 in.) or 50.8 mm (2 in.)	
Printing/cutting width *2		Max. 1600 mm (63 in.)	Max. 1346 mm (53 in.)
Ink	Type	TrueVIS INK TR2 500 cc pouch (White 250 cc)	
	Colours	Eight colours (Cyan, Magenta, Yellow, Black, Light Cyan, Light Magenta, Light Black and White) Eight colours (Cyan, Magenta, Yellow, Black, Light Cyan, Light Magenta, Light Black and Orange) Four colours (Cyan, Magenta, Yellow and Black)	
Printing resolution (dots per inch)		Max. 1200 dpi	
Cutting speed		10 to 300 mm/s (0.4 to 11.8 in/s)	
Blade force *3		30 to 500 gf	
Blade	Type	Roland CAMM-1 series blade	
	Offset	0.000 to 1500 mm (0.0 to 59.1 mil)	
Software resolution (when cutting)		0.025 mm/step (0.98 mil/step)	
Distance accuracy (when printing) *4 *5		Error of less than ±0.3% of distance travelled or ±0.3 mm (±11.8 mil), whichever is greater	
Distance accuracy (when cutting) *4		Error of less than ±0.4% of distance travelled or ±0.3 mm (±11.8 mil), whichever is greater. When distance correction has been performed (when the setting for [CUTTING MENU] - [CALIBRATION] has been made): Error of less than ±0.2% of distance travelled or ±0.1 mm (±3.9 mil), whichever is greater	
Repeatability (when cutting) *4 *6		±0.1 mm (±3.9 mil) or less	
Alignment accuracy for printing and cutting *4 *7		±0.5 mm (±19.7 mil) or less	
Alignment accuracy for printing and cutting when reloading media *4 *8		Error of less than ±0.5% of distance travelled, or ±3 mm (±0.2 in.), whichever is greater	
Media heating system *9		Print heater set temperature: 30 to 45°C (86 to 112°F) Dryer set temperature: 30 to 50°C (86 to 122°F)	
Connectivity		Ethernet (100BASE-TX/1000BASE-T, automatic switching)	
Power-saving function		Automatic sleep feature	
Power requirements		AC 100 to 120 V ±10%, 8.0 A, 50/60 Hz or AC 220 to 240 V ±10%, 4.1 A, 50/60 Hz	
Power consumption	During operation	Approx. 1090 W	
	Sleep mode	Approx. 40 W	
Acoustic noise level	During operation	63 dB (A) or less	
	During standby	53 dB (A) or less	
Dimensions (with stand)		2945 (W) × 730 (D) × 1310 (H) mm (116 × 28.8 × 51.6 in.)	2685 (W) × 730 (D) × 1310 (H) mm (105.8 × 28.8 × 51.6 in.)
Weight (with stand)		204 kg (451.9 lb.)	188 kg (421 lb.)
Environment	Power on	Temperature: 20 to 32°C (68 to 90°F), humidity: 35 to 80%RH (no condensation)	
	Power off	Temperature: 5 to 40°C (41 to 104°F), humidity: 20 to 80%RH (no condensation)	
Included items		VersaWorks 6 RIP Software, exclusive stands, power cable, media clamps, media holders, replacement blade for separating knife, manuals, etc.	

VersaWorks 6 System Requirements	
Operating system	Windows® 10 (32/64-bit), Windows® 8.1 (32/64-bit), Windows® 7 Professional / Ultimate (32/64-bit)
CPU	Intel® Core™2 Duo, 2.0 GHz or faster recommended
RAM	2 GB or more recommended
Video card and monitor	A resolution of 1280 x 1024 or more recommended
Free disk space (HDD/SSD)	40 GB or more recommended
Hard-disk file system	NTFS format
Optical drive	DVD-ROM drive
Other	Internet connection recommended

Options		
TrueVIS INK	TR2-CY	Cyan, 500 cc
	TR2-MG	Magenta, 500 cc
	TR2-YE	Yellow, 500 cc
	TR2-BK	Black, 500 cc
	TR2-LC	Light Cyan, 500 cc
	TR2-LM	Light Magenta, 500 cc
	TR2-LK	Light Black, 500 cc
	TR2-OR	Orange, 500 cc
	TR2-WH	White, 250 cc
	Cleaning liquid	TR2-CL
Blades	ZEC-U5032	For standard sign vinyl, 2pcs.
	ZEC-U5025	For standard sign vinyl, reflective and fluorescent / thick media, 5pcs.
Blade holders	XD-CH2	Adjustable blade holder - aluminium
	XD-CH3	Adjustable blade holder - resin

## Automated take-up system



TU4-64 [For VG2-640]  
TU4-54 [For VG2-540]  
Rolls up to 40 kg (88.2 lb.)

## Heater and blower



DU2-64 [For VG2-640]  
Power requirements  
AC 100 to 120 V ±10%, 5.5 A, 50/60 Hz  
AC 220 to 240 V ±10%, 3 A, 50/60 Hz

DU2-54 [For VG2-540]  
Power requirements  
AC 100 to 120 V ±10%, 5 A, 50/60 Hz  
AC 220 to 240 V ±10%, 2.6 A, 50/60 Hz

Heater and blower recommended for printing with White

Specifications, designs and dimensions listed may be subject to change without notice. \*1 The media holders of this machine are designed to be used exclusively with media that has a paper tube (core) with an inner diameter of 76.2 mm (3 in.). To use 50.8 mm (2 in.) media, the optional media flanges are required. \*2 The length of printing or cutting is subject to the limitations of the program. \*3 500 gf is the maximum instantaneous blade force. The blade force must be adjusted according to details such as the media thickness. \*4 Media type: Media specified by Roland DG Corporation. Temperature: 25°C (77°F), humidity: 50%RH. Roll media must be loaded correctly. Applicable when all pinch rollers that can be used with the media width are used. Side margins: 25 mm (1.0 in.) or more for both the left and right margins. Excluding expansion/contraction of the media. Not assured when the print heater or dryer is used. Assumes all correction and adjustment functions of the machine have been used properly. \*5 Print travel: 1 m (39.4 in.) \*6 [PREFEED] menu item must be set to "ENABLE." Range for assured repetition accuracy. For media with a width exceeding 610 mm (24 in.): Length: 4000 mm (157.5 in.). For media with a width of 610 mm (24 in.) or less: Length: 8000 mm (315 in.) \*7 Provided that the media feed length is 3000 mm (118.1 in.) or less. Excludes the effects of slanted movement and of expansion and contraction of the media. \*8 Data size: 1625 mm model: 1000 mm (39.4 in.) in the media-feed direction, 1600 mm (63 in.) in the carriage-movement direction. 1371 mm model: 1000 mm (39.4 in.) in the media-feed direction, 1346 mm (53.0 in.) in the carriage-movement direction. No lamination. Automatic detection of crop marks at 4 points when media is reloaded. During cutting, [PREFEED] menu item must be set to "ENABLE." Excluding possible shift caused by expansion/contraction of the media and/or by reloading the media. \*9 Warm-up is required after power up. This may require 5 to 20 minutes, depending on the operating environment. Depending on the ambient temperature and media width, the preset temperature may fail to be reached.

Due to the nature of White ink, the pigment in this ink will settle in the cartridge and ink flow system, requiring you to shake the cartridge before each use. Outdoor durability is three years for CMYK LcM Lk Or inks, and one year for White ink, depending on the media used.

Roland DG reserves the right to make changes in specifications, materials or accessories without notice. Your actual output may vary. For optimum output quality, periodic maintenance to critical components may be required. Please contact your Roland DG dealer for details. No guarantee or warranty is implied other than expressly stated. Roland DG shall not be liable for any incidental or consequential damages, whether foreseeable or not, caused by defects in such products. PANTONE® is the property of Pantone LLC. All other trademarks are the property of their respective owners. Reproduction or use of copyrighted material is governed by local, national, and international laws. Customers are responsible for observing all applicable laws and are liable for any infringement. Roland DG Corporation has licensed the MMP technology from the TPL Group.

Imagine. 

AUTHORISED DEALER:

SELECT IMAGES BY:



www.rolanddg.eu